

KOICA-Yonsei University Master's Degree Program In Social Economy

February 19, 2027 – June 15, 2028

Wonju, Republic of Korea



Korea International Cooperation Agency



YONSEI
UNIVERSITY
MIRAE CAMPUS

Yonsei University Mirae Campus

**We strongly recommend that applicants carefully review and adhere to the instructions provided in the Program Information.*

Contents

★ IMPORTANT NOTICE from KOICA.....	1
I. PROGRAM OVERVIEW.....	2
II. PROGRAM CONTENTS	4
III. TRAINING INSTITUTE.....	14
IV. ACADEMIC REGULATIONS	24
V. PRECAUTIONS.....	29
VI. HOW TO APPLY TO TRAINING INSTITUTE (UNIVERSITY)	31
VII. CONTACTS.....	34

★ IMPORTANT NOTICE from KOICA

The 2027 KOICA Master's Degree Program application process consists of two main rounds: **(1) KOICA Round** and **(2) Institute (University) Round**.

The first round involves the KOICA Selection, where applicants are recommended by their country's relevant government. The application process will take place at the KOICA country office, or in the case of countries without a KOICA country office, at an affiliated KOICA country office or the Korean Embassy. Detailed eligibility criteria and procedures can be found in **the KOICA Scholarship Program Application Guidelines** (hereinafter **KOICA Guidelines**).

The second round is the Institute (University) Round, which is the university selection process. Only those who pass the KOICA Round can apply to universities. The list of successful KOICA Round candidates will be forwarded to the universities that the applicants applied to. Each university will conduct its own selection process, including document review, local medical check-ups, and interviews (or/and exam), based on their specific admission requirements. Those who have been finally accepted at the university round are required to submit original documents to the University.

[This Program Information](#) (hereinafter PI) serves as a guide for the second round, the Institute (University) Round.

Before you proceed with your application, we kindly request that you carefully review and comprehend the guidelines outlined in both the **KOICA Guidelines** and **Program Information(PI)**. It is essential to note that the responsibility for any inaccuracies in the information provided rests with the applicant. Additionally, please be mindful that each university may have unique selection procedures, document submission requirements, and deadlines. Therefore, we recommend you to pay close attention to these specific details during the application process.

Lastly, please note that the schedule may be subject to changes depending on KOICA/Institute circumstances. Any updates will be announced on the KOICA CIAT website (<https://www.koica.go.kr/sites/ciat/index.do>). Regularly check the website for the latest information. For any inquiries, please refer to Section **[VIII.CONTACTS](#)** and contact us accordingly.

① KOICA Round Conducted by KOICA country Office (Korean Embassy)	
July 2026	Submission of Application (Via Email/ to KOICA country Office or Korean Embassy)
	Document Screening (Submitted documents are non-returnable)
	On-site Interview
	First Round Result
② INSTITUTE(University) Round (Only for those who pass the First Round)	
September to December 2026	Submission of Application Package (Via University email/system)
	Document Screening (Submitted documents are non-returnable)
	Local Medical Check-up
	Interview Test of University (or/and Exam/Essay)
	Second Round Result
	Original Document Submission (to Yonsei University, Mirae Campus)

NOTE: Upon successfully passing the second round of the selection process, candidates who have also cleared the medical check-up in Korea will be ultimately confirmed as scholarship recipients. Detailed guidance regarding the post-second-round selection process will be provided exclusively to successful candidates.

I . PROGRAM OVERVIEW

▣ **Program Title:** KOICA-Yonsei University Master's Degree Program in Social Economy

▣ **Duration Details**

- **Academic Duration:**

- February 1, 2027 to August 31, 2028

In accordance with the university regulations, the diploma will be issued in August 2028.

- Pre-Course (Online/Offline) : February 1 - February 28, 2027
- Regular-Course (Offline) : March 2, 2027 - June 8, 2028

- **Stay Duration:**

- February 19, 2027 to June 15, 2028
(All phases are 17 months, including 10 days of orientation each)

During 17 months in Yonsei University Mirae Campus, students are strongly recommended to complete their thesis.

The schedule is subject to change in accordance with internal circumstance or KOICA's instruction.

▣ **Degree:** Master of Public Policy

** Please note that the program title and the degree title may differ. The degree will be conferred in accordance with the degree title indicated in the PI. (For KOICA certificates, the program title will be included.)*

▣ **Degree Objectives:**

To achieve the goal of nurturing leaders who can drive social innovation, the program focuses on five key strategic objectives:

- **Creation of Social Value:** Mastering the ability to identify social needs and design interventions that generate measurable social impact and public good.
- **Sustainable Management Competency:** Developing the business acumen and strategic skills required to ensure the long-term financial and operational sustainability of social economy organizations.
- **Cultivation of Social Economy Ecosystems:** Learning how to foster supportive environments by connecting diverse stakeholders and building institutional frameworks for the social economy.
- **Sector-Specific Expertise:** Gaining specialized knowledge in diverse fields such as health and social services, agriculture, and labor to address domain-specific challenges.
- **Field-Oriented Social Innovation Leadership:** Equipping students with practical leadership skills through Living Labs and Action Plan workshops to lead immediate and effective changes upon returning home.

▣ **Training Institute:**

- The Graduate School of Government and Business, Yonsei University Mirae Campus

▣ **Number of Participants:** 20

▣ University Admission Qualification:

Applicants must meet the following criteria to be eligible for the program:

- Be current government officials from central or local departments, employees of public/national research institutes, or practitioners and activists within social economy organizations in KOICA partner countries.
- Be involved in policy development and project implementation across all sectors of the social economy, including but not limited to: cooperatives, social enterprises, local development, village unions (community-based organizations), and non-profit organizations (NPOs).
- Hold a Bachelor's degree officially recognized by the government in partner countries.
- Exhibit proficiency in spoken and written English, as all classes are conducted in English.
- Be in good physical and mental health.
- Have no prior participation in similar KOICA training programs.
- Fulfill the specific requirements outlined by the Graduate School of Government and Business at Yonsei University Mirae Campus and KOICA.
- Former dropouts from programs similar to the KOICA Scholarship Program are ineligible.

▣ Language: English

▣ Accommodations: Yonsei University Mirae Campus Dormitory

- Address (English): Yonsei University Dormitory, Yonsei University Mirae Campus, 1 Yonseidae-gil, Wonju-si, Gangwon-do, 26493, Republic of Korea.
- Address (Korean): **(26493) 대한민국 강원특별자치도 원주시 연세대길 1 연세대학교 미래생활관.**
- Furnished double-occupancy rooms (shared by two students) are provided in Seiyeon Haksa and Cheongyeon Haksa. Each room includes bed, desk, closet, mattress (bedding excluded), small refrigerator, air conditioner, shower, toilet, LAN, and floor lounge facilities. Students must bring or purchase individual bedding.
- **Seiyeon Haksa provides twin rooms, while Cheongyeon Haksa offers triple rooms designed for two occupants.**
- Please note that individual bedding (blanket, pillow) must either be brought from home or purchased upon arrival at the university.



II. PROGRAM CONTENTS

1. ACADEMIC SCHEDULE

Term	Date	Contents/Remarks
Preparatory Session (Pre-Courses)	2027.2.1 – 2.28	Pre-course
	2027.2.19	Arrival
	2027.2	KOICA Orientation, Medical Check-up
Spring Semester (1st Semester)	2027.3.2.- 6.22.	16 weeks
Break	2027.6.23. - 6.27.	5 days
Summer Session	2027.6.28. - 2027.7.15.	3 weeks
Summer Break	2027.7.16. - 8.31.	7 weeks
Fall Semester (2nd Semester)	2027.9.1.- 12.20.	16 weeks
Break	2027.12.21.- 12.26.	6 days
Winter Session	2027.12.27. - 2028.2.28.	10 weeks
Spring Semester (3rd Semester)	2028.3.2.- 6.8.	16 weeks
Wrap-up Session	2028.6.1. - 6.8.	Final Oral Defense
	2028.6.12.	Graduation Ceremony
	2028.6.15.	Departure

*THE ABOVE SCHEDULE IS SUBJECT TO CHANGE.

**A DETAILED PROGRAM SCHEDULE WILL BE PROVIDED UPON ARRIVAL.

***ARRIVAL IN KOREA & KOICA ORIENTATION (OFFLINE)/THE SCHEDULE ABOVE IS TENTATIVE.

2. CURRICULUM

1) Program Background

The Unique Model of Korean Social Economy

The development of the social economy in South Korea presents a distinctive and successful model that differs from Western experiences. It is characterized by a dynamic harmony between bottom-up voluntary community organizing and strategic institutional support from the government. This model has evolved through the resilient spirit of local entrepreneurship, where citizens addressed social challenges—such as poverty, inequality, and regional decline—by establishing self-governing cooperatives and social enterprises. By studying this unique path, students will gain insights into how a developing nation can successfully institutionalize social values while maintaining economic vitality.

Evidence-Based and Expert-Driven Curriculum

Our curriculum is not merely theoretical; it is the result of rigorous empirical research and professional consultation. To ensure that the program meets the specific needs of developing countries, Yonsei University conducted a comprehensive survey involving 31 leading social economy experts from both domestic and international arenas. This collaborative design process ensures that students receive the most relevant and impactful education, bridging the gap between global standards and local application.

Unrivaled Research Infrastructure: The 41-Region Database

Yonsei University distinguishes itself as a premier research hub by maintaining and operating an exclusive database (DB) covering social economy data from 41 distinct regions across South Korea. This extensive DB provides students with a rare opportunity to conduct evidence-based policy analysis and comparative research. By utilizing this big data, students can diagnose the socio-economic status of their home countries with greater precision and design data-driven Action Plans that have a higher probability of success.

World-Class Faculty with K-Social Economy Expertise

The program is led by a faculty of distinguished scholars who are the primary architects of “K-Social Economy” research. Our professors are not only academic leaders but also active practitioners who have shaped Korea's social economy policies and legal frameworks. Their deep-rooted expertise in local stakeholder involvement, community-based innovation, and cooperative management offers students a “Masterclass” experience in social transformation.

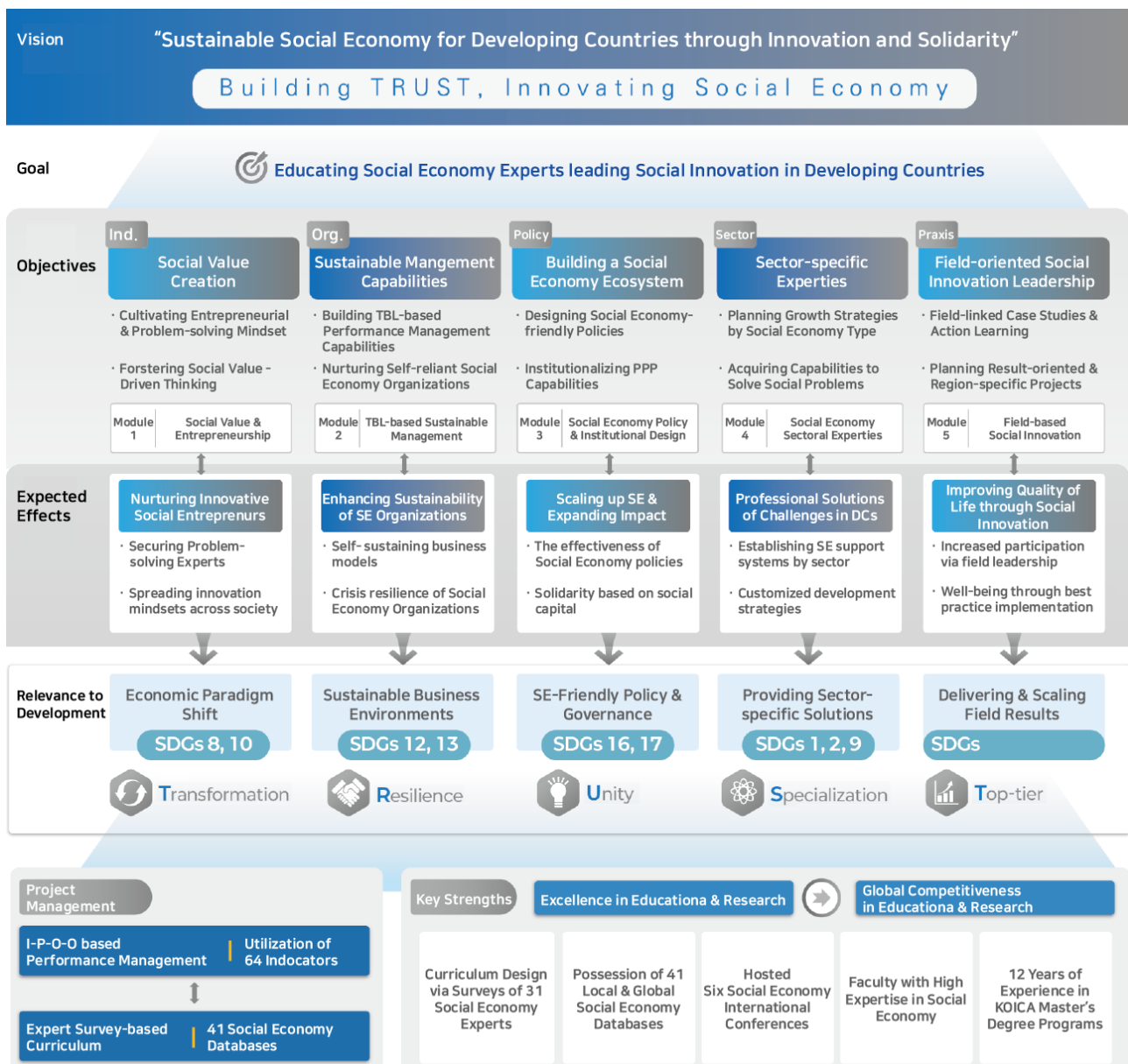
A Bridge to Global Social Innovation

By joining this program, scholars will immerse themselves in the "Wonju Model" - the heart of Korea's social economy movement – and learn how to adapt these successful strategies to their own national contexts. Our goal is to provide a transformative educational journey where Korea's historical lessons and Yonsei's analytical rigor empower students to lead the next generation of social innovation in developing countries. Through field-based learning, participants will gain practical insights into community-centered development and sustainable governance. The program will also foster a global network of future leaders committed to advancing inclusive and socially innovative policies in their home countries.

Vision and Goals

The Master's Program in Social Economy at Yonsei University Mirae Campus is a specialized professional degree designed for government officials, public sector employees, and social economy practitioners from developing countries. In collaboration with Yonsei University's world-class faculty, this program empowers students to develop the capacity to solve complex social problems and grow into "Social Economy Experts leading Social Innovation in Developing Countries." Our core vision is to "Build a Sustainable Social Economy for Developing Countries through Innovation and Solidarity." By bridging academic rigor with practical application, the program provides students with the tools to transform their local communities and foster resilient social ecosystems.

To ensure the program's relevance and impact, Yonsei University conducted an extensive survey of 31 leading social economy experts, from Korea and around the world. Based on the insights gathered from these specialists, the curriculum has been meticulously designed to meet the real-world demands of the global social economy sector. Furthermore, the program operates under a robust Performance Management System based on the I-P-O-O (Input-Process-Output-Outcome) framework, ensuring that every educational input leads to tangible policy changes and social outcomes in the students' home countries.

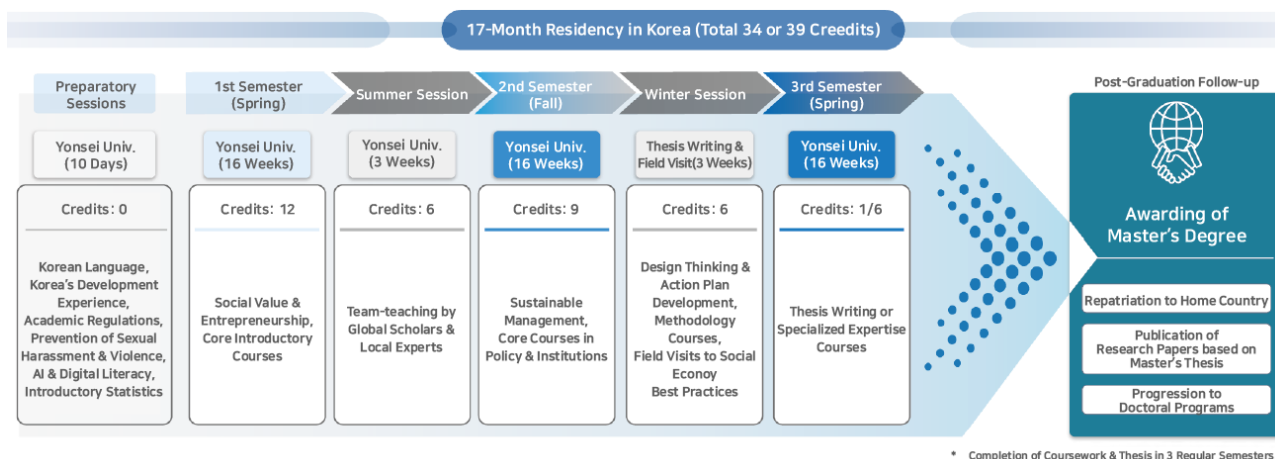


2) Semesters and sessions

The Program is run for three regular semesters, plus two summer/winter sessions: from spring semester of 2027, as shown in the table below.

Semester	Total Credits (34 or 39)	Place	Duration
Orientation	0 credits	Yonsei University	10 days
Spring Semester 2027	12 credits	Yonsei University	16 weeks
Summer session 2027	6 credits	Yonsei University	3 weeks
Fall semester 2027	9 credits	Yonsei University	16 weeks
Winter session 2027	6 credits	Yonsei University	10 weeks
Spring semester 2028	1 (Thesis Track) or 6 (Non-Thesis Track) credits	Yonsei University	16 weeks

The academic schedule for Master's degree is structured with three regular semesters (Spring, Fall, Spring) having credit-bearing coursework, while the winter sessions and the spring semester of 2028 focuses on thesis writing or action plan designing. Students are required to complete all semesters and sessions outlined in the program during their study period in Korea. If students wish to take a break between semesters, breaks can only be scheduled after the winter and summer sessions when there are no ongoing academic activities.



3) Curriculum & Credits

3-1) Pre-course

Upon the students' initial arrival, a 2~3 day orientation for KOICA's Scholarship Program is held at the KOICA. This orientation serves to furnish participants with essential information about the program and general insights on living in Korea necessary throughout their program duration.

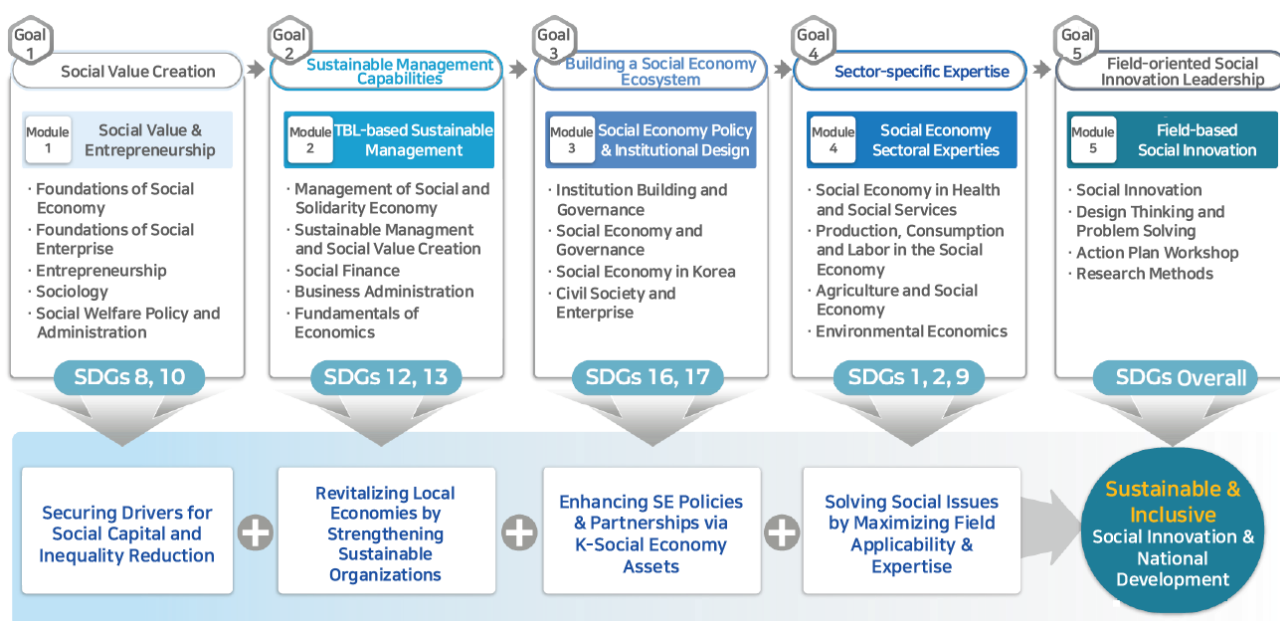
- The Preliminary Course at Yonsei University Mirae Campus:** The Preliminary Course is a foundational program designed to equip incoming international scholars with the essential linguistic, cultural, and academic tools required for a successful journey at Yonsei University. Before the commencement of the official Master's degree program, students will undergo intensive training that bridges the gap between their diverse backgrounds and the Korean academic environment. This course ensures that students are

not only academically prepared but also culturally and ethically attuned to the standards of the university and Korean society. Core curriculum of the preliminary course is as follows:

1. **Korean Language & Culture:** Basic communicative Korean language skills and an introduction to the rich History and Culture of Korea to facilitate daily life and social integration.
2. **Korea’s Development Experience:** A comprehensive overview of Korea’s rapid economic and social transformation, providing a contextual foundation for social economy studies.
3. **Academic Foundations (Economics & Statistics):** Modules in Economics and Statistics to ensure all students possess the prerequisite analytical skills for advanced graduate-level research.
4. **AI Utilization Guidelines:** Specialized training on the ethical and productive use of Generative AI in academic research and report writing, ensuring integrity in the digital era.
5. **Institutional & Ethical Training:** Mandatory safety and ethics education, including Prevention of Sexual Harassment and Gender-based Violence, to foster a safe and respectful campus community.

Students will be guided to access the selected lectures through the following website: Global Korean Studies Academy: <https://igks.kr/en/>

3-2) Regular-course



Module	Course Classification	Course Title	Hrs. Credit
Module 1: Social Value and Entrepreneurship	Module objectives	<ul style="list-style-type: none"> • To empower students to grow into social innovation leaders by establishing a profound understanding of the core values of the social economy tailored to the challenging environments of developing countries. • To build a theoretical foundation for community-led circular economies based on cooperation and reciprocity, enabling residents to become free and proactive agents of economic activity. • To redefine the role of public officials as innovation facilitators and policy partners who encourage social entrepreneurs to take calculated risks and pursue creative endeavors. 	

	Mandatory	Foundations of Social Economy	48	3
	Mandatory	Foundations of Social Enterprise	48	3
	Elective	Entrepreneurship	48	3
	Elective	Sociology	48	3
	Elective	Social Welfare Policy and Administration	48	3
Module 2: TBL-based Sustainable Management	Module objectives	<ul style="list-style-type: none"> To acquire integrated management expertise to oversee organizational operations, governance, and financial structures from a strategic business perspective, ensuring the self-sufficiency of social economy organizations (SEOs). To cultivate the ability to formulate management strategies that balance the "Triple Bottom Line" - economic revenue, social responsibility, and environmental conservation - to drive long-term, fundamental socio-economic development. Strengthen financial management capabilities to scale up SEOs by mastering modernized social finance techniques, such as impact investing, crowdfunding, and blended finance, to overcome capital market limitations in developing nations. 		
	Mandatory	Management of Social and Solidarity Economy	48	3
	Elective	Sustainable Management and Social Value Creation	48	3
	Elective	Social Finance	48	3
	Elective	Business Administration	48	3
	Elective	Fundamentals of Economics	48	3
	Elective	Public Financial Administration	48	3
Module 3: Social Economy Policy Formulation	Module objectives	<ul style="list-style-type: none"> To develop policy-planning competencies to design and operate social economy-friendly institutional frameworks and legislative foundations. To study governance models where government, business, and civil society participate as equal partners in decision-making, and increase the feasibility of social economy models by building multi-stakeholder platforms. To provide a roadmap for national legislation by analyzing Korea's experience in enacting the 'Social Enterprise Promotion Act' and the 'Framework Act on Cooperatives' and offer guidelines for establishing efficient government support systems. 		
	Mandatory	Institution Building and Governance	48	3
	Elective	Social Economy and Governance	48	3
	Elective	Social Economy in Korea	48	3
	Elective	Civil Society and Enterprise	48	3
	Elective	Policy Formulation Process	48	3
	Elective	International Development Cooperation	48	3
Module 4: Sector-specific Expertise	Module objectives	<ul style="list-style-type: none"> To provide specialized expertise in sectors including healthcare, agriculture, and environment to enable scholars to solve their home countries' most urgent challenges through unique social economy mechanisms. To align sectoral training with the Sustainable Development Goals (SDGs) to enhance professional competencies in health, agriculture, decent work, production, environment, and gender equality. 		
	Elective	Social Economy in Health and Social Services	48	3
	Elective	Production, Consumption and Labor in the Social	48	3

		Economy		
	Elective	Agriculture and Social Economy	48	3
	Elective	Environmental Economics	48	3
	Elective	Global Health and Development	48	3
	Elective	Gender and Development	48	3
Module 5: Action Learning for Social Innovation	Module objectives	<ul style="list-style-type: none"> To provide an Action Learning-based experience to enhance the social innovation capabilities of public officials from developing countries, moving beyond theory to practical problem-solving. To maximize the on-site applicability and contribution to national development by internalizing action-learning methodologies, ensuring that academic learning translates into real-world administrative impact. To offer intensive supervising for the completion of high-quality master's theses and action plan. 		
	Elective	Social Innovation	48	3
	Elective	Design Thinking and Problem Solving	48	3
	Elective	Action Plan Workshop	48	3
	Elective	Quantitative Research Methodology	48	3
	Elective	Qualitative Research Methodology	48	3
	Elective	Research Methods	48	3
	Elective	How to Write Thesis	12	1

3-3) Graduation Requirements

To qualify for graduation, students must maintain a GPA above 2.7, equivalent to higher than B-, and complete the required credits according to their chosen track: 34 credits for the thesis track or 39 credits for the action plan report track. Students must also submit either a master's thesis or an action plan report, depending on their selected track as follows:

Graduation Requirements	
I. Track Types	
The program offers two tracks: the Thesis Track and the Non-Thesis Track.	
II. Thesis Track	
1) Credit Requirements	
<ul style="list-style-type: none"> Total credits required: 34 (13 required + 21 elective) The course Thesis Writing, which is listed as an elective in the Non-Thesis Track, is mandatory in the Thesis Track. Directed Research: Students must complete directed research with the department chairperson (1 credit, graded Pass/Fail). 	
2) Comprehensive Examination Requirements	
<ul style="list-style-type: none"> Students whose cumulative GPA through the fall semester is 3.75 or above are exempt from the comprehensive examination. Students whose cumulative GPA through the fall semester is below 3.75 must pass the comprehensive examination in 3 subjects. Students who fail the examination are permitted one retake opportunity. 	
III. Non-Thesis Track	
1) Basic Principles	

- This track is available only in exceptional cases reviewed and approved by the Program Operations Committee.
- Reasons such as academic workload or return-travel scheduling are not accepted as valid grounds.

2) Credit Requirements

- Total credits required: 39 (15 required + 24 elective)
- The course Action Plan Workshop, which is listed as an elective in the Thesis Track, is mandatory in the Non-Thesis Track.

3) Action Plan Requirements

- The Action Plan must meet all of the following criteria:
 - ✓ Include concrete policy or project plans applicable to the social economy context in the trainee's home country.
 - ✓ Explicitly demonstrate linkages between theories and Korean case studies learned throughout the program.
 - ✓ Follow the prescribed structure: Problem Definition – Goal Setting – Implementation Strategy – Expected Outcomes – Monitoring Plan
 - ✓ Minimum length: 20 pages (A4), written in English

IV. Summary Comparison

	Thesis Track	Non-thesis Track
Total Credits	34	39
Required Courses	Foundations of Social Economy (3) Foundations of Social Enterprise (3) Management of Social and Solidarity Economy (3) Institution Building and Governance (3) How to Write Thesis (1) Directed Research (0, P/NP)	Foundations of Social Economy (3) Foundations of Social Enterprise (3) Management of Social and Solidarity Economy (3) Institution Building and Governance (3) Action Plan Workshop (3) Additional Course (3)
Graduation Output	Master's Thesis	Action Plan (minimum 20 pages, A4, in English)
Steering Committee Approval	Not required	Required

3. EXTRACURRICULAR ACTIVITIES (TENTATIVE)

1) Field-based Learning Activities

To enhance students' practical understanding of the social and solidarity economy, the program provides diverse extracurricular and field-based learning activities closely linked to coursework. These activities are designed to help scholars understand how academic knowledge is applied in real-world settings and to explore successful Korean cases that can be adapted to their own countries.

Field learning activities include site visits, industrial tours, and integrated experiential learning programs conducted in cooperation with course instructors. Through these activities, students will engage in both curricular and non-curricular learning experiences connected to classroom topics.

The program particularly utilizes the “Wonju Model,” one of Korea’s most representative social economy ecosystems, as a living laboratory for learning. Students will visit various regions and organizations that demonstrate different types of social economy practices, including:

- **Wonju and Anseong:** Medical welfare social cooperatives and community healthcare networks
- **Seongnam:** The Korea Social Enterprise Promotion Agency and cases demonstrating the coexistence of traditional and contemporary social economy models
- **Hongdong Village:** Community-based social economy activities and local governance collaboration
- **Gochang:** Asset-sharing and village welfare investment models utilizing communal resources
- **Uiseong:** Resident autonomy and local governance models linked to social economy development

In addition, students will participate in field visits related to agriculture, healthcare, production, and consumption sectors, as well as industrial visits to major Korean companies and organizations. Cultural field trips to historical and cultural sites such as Gyeongju, Jeonju Hanok Village, museums, and the DMZ will also be provided to deepen participants’ understanding of Korean society and culture.

Through these extracurricular activities, scholars will gain practical insights into community-centered development, governance, and social innovation while building networks with practitioners and local stakeholders across Korea.



2) Special Activities

The program provides a wide range of extracurricular and special activities designed to strengthen students’ understanding of Korea, promote global networking, and enhance intercultural exchange among scholars, Korean students, and local communities.

To support students' academic and social adaptation, the program offers regular Korean Language and Culture courses. In addition, Korean students participate in a one-on-one mentoring program with participants to encourage mutual learning of Korean and English as well as intercultural exchange.

The program also operates several curriculum-related special activities. Through the Global Poverty and Global Leader Lecture Series, invited experts with extensive experience in international development and Korea's development experience provide special lectures and discussion opportunities. Scholars are also encouraged to participate in the Institute for Poverty Alleviation and International Development (IPAID) Weekly Forum hosted by Yonsei University. In the Global Pioneer Lecture Series, students introduce their own countries and development experiences through presentations and lectures prepared by themselves, while interacting with Korean undergraduate students and expanding international exchange within the campus community. Outstanding course papers and master's theses are further encouraged to be presented at domestic academic conferences and seminars related to international development.

Various extracurricular activities are also organized to strengthen student networks and campus engagement. Students participate in a student self-governance association and monthly meetings with faculty members and program staff to discuss academic progress and student life. They are also encouraged to join the Global Village Program, where Korean and international students share dormitory spaces and engage in daily intercultural communication and exchange.

The program promotes active interaction with Korean undergraduate and graduate students through student organizations and exchange activities. Students can participate in programs to build cultural understanding of Korea. Exchanges with graduate students in international welfare and development-related programs within the Graduate School are also encouraged through various academic and non-academic activities.

To deepen cultural understanding and campus integration, students are encouraged to participate in university festivals, regional community festivals, and cultural events such as the Yonsei Concert Series, which includes regular music performances and concerts. Students may also participate in campus sports activities, including sports clubs and university leagues, often together with Korean students.

During vacation periods, students can continue participating in non-curricular activities on campus while residing in university dormitories. Seasonal programs such as action learning, thesis preparation, case studies, and practical training are additionally provided. The program also encourages participation in volunteer and community engagement activities developed in cooperation with local organizations, enabling students to experience social value practices and deepen their understanding of Korean local communities.

III. TRAINING INSTITUTE

1. GENERAL INFORMATION

1) About the University

Yonsei University

Established in 1885 by Christian missionaries, Yonsei University stands as South Korea's oldest and most prestigious private institution, dedicated to cultivating global leaders who embody the founding values of "Truth and Freedom." With a formidable legacy of over 400,000 alumni spearheading innovation and leadership across the globe, Yonsei continues to redefine excellence in higher education.

Most notably, Yonsei University has reached a historic milestone by ranking 50th in the world in the QS World University Rankings 2026. This achievement marks Yonsei as the first Korean private university to enter the Global Top 50, further solidifying its position as the No. 1 private university in Asia for four consecutive years.



The university operates across a multi-campus system, including the historic Sinchon campus nestled in the heart of Seoul and the state-of-the-art Mirae and International campuses. The university hosts a distinguished community of over 5,000 faculty members engaged in pioneering research and world-class instruction. As of the latest 2024 academic statistics, Yonsei University comprises 21 graduate schools, 22 colleges (including Underwood International College and specialized faculties), and 155 subsidiary institutions. This robust academic infrastructure attracts a highly selective and diverse student body, fostering a vibrant, multicultural environment dedicated to solving the complex challenges of the 21st century.

Yonsei University Mirae Campus

Established in 1977 as the second foundational campus of Yonsei University, the Mirae Campus (formerly Wonju Campus) has evolved into a strategic hub for global education and regional innovation. As of the 2024

academic year, the Mirae Campus hosts a vibrant academic community of approximately 8,000 students (including undergraduates and graduates) and over 850 faculty members across 54 academic departments. Situated in the heart of Gangwon Province - approximately 100 kilometers east of Seoul - the campus spans 500 acres of breathtaking landscape, famously enveloped by dense forests and the serene Maeji Lake. This picturesque setting offers more than just aesthetic beauty; it provides a focused, tranquil environment conducive to rigorous academic pursuit and cross-cultural exchange. With state-of-the-art research facilities, a specialized focus on digital healthcare and social economy, and a richly diverse cultural ambiance, the Mirae Campus offers an exceptional academic experience. It serves as a cosmopolitan gateway where international scholars can engage in pioneering research while experiencing the unique harmony of South Korea's natural heritage and academic excellence.



The Graduate School, Yonsei University Mirae Campus

The Graduate School of Government and Business (GSGB) at Yonsei University Mirae Campus is a premier institution dedicated to fostering global leaders through advanced education and interdisciplinary research. Since its inception in March 1990, the GSGB has served as a strategic academic hub, integrating public administration, and management to solve complex social and economic challenges. GSGB has been a pivotal partner in international development, contributing to the sustainable growth of the developing countries.

For over 12 years, we have successfully managed prestigious KOICA Master's Programs, ranging from the "World Poverty Alleviation and Rural Development Leadership" to the "Enhancement of Women's Agricultural Policy Capacity." Through these programs, we have trained numerous high-ranking officials and policymakers from developing countries, establishing an unrivaled track record in global human resource development. The commitment to academic excellence is further demonstrated by our participation in the BK21 (Brain Korea 21) Project. Since 2013, our "Law, Politics, and Administration" panel has led a long-term initiative focused on nurturing next-generation scholars and experts in public administration. This prestigious government-funded project ensures that our graduate students are trained under the highest research standards, blending rigorous academic theory with data-driven policy analysis.

Key Features and Advantages of the KOICA-Yonsei Master's Degree Program in Social Economy



The Frontier of Social Innovation and Solidarity

The Major in Social Economy at Graduate School of Government & Business, Yonsei University Mirae Campus is a pioneering program designed to cultivate "Social Innovation Leaders" who can navigate the complexities of global development. While traditional management focuses on profit maximization, our program focuses on the Triple Bottom Line: People, Planet, and Profit. We provide a transformative educational experience that blends the essence of community solidarity with the rigor of modern business strategy, empowering students to build self-reliant and sustainable economic models in developing countries.

Core Pillars of the Curriculum

Our curriculum is structured around four strategic pillars, ensuring a holistic mastery of the social economy landscape:

- **Philosophical Foundation:** Deeply understanding 'Community Solidarity' and 'Social Entrepreneurship' to empower marginalized populations as proactive economic agents.
- **The K-Social Economy Model:** Analyzing Korea's unique success story—where grassroots movements and institutional frameworks (such as the Framework Act on Cooperatives) synergize—and adapting these lessons to local contexts.
- **Business & Financial Excellence:** Mastering advanced management tools, transparent governance, and modernized social finance (Impact Investing, Blended Finance) to ensure the scalability and self-sufficiency of social organizations.
- **Evidence-Based Policy Design:** Utilizing our exclusive 41-Region Social Economy Database to conduct rigorous diagnostics and design data-driven policies that achieve both food security and rural poverty alleviation.
- **A Multi-Sectoral and Interdisciplinary Approach:** Recognizing that social problems are multi-faceted, our program provides Sector-Specific Expertise. Scholars can specialize in applying social economy mechanisms to critical fields such as:
 - Smart Agriculture & Local Food Systems
 - Environmental Governance & Resource Circulation
 - Decent Work & Vocational Training for Vulnerable Groups
 - Digital Healthcare & Social Services

- **Action-Learning & Impact-Oriented Research:** We bridge the gap between theory and practice through a "Living Lab" pedagogy. Our students don't just write papers; they design Action Plans that are immediately implementable upon their return home. With intensive mentorship from world-class faculty and access to high-level research infrastructure (Brain Korea 21 research panels), scholars are equipped to lead national legislative roadmaps and build multi-stakeholder platforms (Government-Business-Civil Society) to accelerate the achievement of the Sustainable Development Goals (SDGs) in local and global level.
- **Why Choose Social Economy at Yonsei?:** By choosing this program, you are not just earning a degree; you are joining a movement. Situated in the "Cradle of Korean Social Economy" (Wonju) and backed by 12 years of KOICA partnership excellence, the Social Economy major at Yonsei University Mirae Campus is the definitive destination for those who wish to transform social challenges into sustainable opportunities for growth and solidarity.

Campus Map

- Address: 1 Yonseidae-gil, Wonju-si, Gangwon-do, 26493, Republic of Korea



Professors

Role	Name	Research Area	Affiliation
Program Director	Sang-Il Han	Social Economy	Yonsei Univ.
Performance Manager	Sung-Jin Park	Accounting	Yonsei Univ.
Academic Manager	Miyang Jun	Public Policy, Social policy	Yonsei Univ.
	Jin Won Noh	Global Health policy	Yonsei Univ.
	So Yon Paek	Entrepreneurship	Yonsei Univ.
	Javier Lopez-Prol	Environmental Economics	Yonsei Univ.
	Kang Mo Koo	Urban Economics	Yonsei Univ.
	Ji Ae Seo	Social Economy	Korea Social Enterprise Promotion Agency
	Jong Ick Jang	Social and Solidarity Economy	Hanshin University
	Seok Ju Ko	Korean Language	Yonsei Univ.
	Seohyun Lee	Global Health Policy	Yonsei Univ.
	Inyoung Cho	Political Economy	Yonsei Univ.
Professor	You Sueng Han	Public Management	Yonsei Univ.
	Hak Yeon Lee	Public Financial Management	Yonsei Univ.
	Eun Ho Ha	Statistics	Yonsei Univ.
	Youn Suk Lee	Agricultural Marketing	Yonsei Univ.
	Joo Myung Lee	Design Thinking	Yonsei Univ.
	Jang Saeng Kim	Community Development	Yonsei Univ.
	Minjeong Park	Social Innovation	Yonsei Univ.
	Sung Jo Kim	Korean Modern History	Yonsei Univ.
	Yeon Seob Ha	Public Financial Management	Yonsei Univ.
	Alan Dixon Brown	Social Economy	Chonnam National Univ.
	Casper Hendrik Claassen	Korea's Social Economy	Seoul National Univ.

2) Homepage: <https://koica.yonsei.ac.kr>

2. ACCOMMODATION

Dormitory

Participants will be accommodated in on-campus Seiyeon and Cheongyon dormitories, with two students assigned to a room based on demand. Regular facility maintenance involves rearranging resident-student

living spaces. KOICA scholarship students may have the opportunity to live with Korean roommates during their stay.

- Address (English): Yonsei University Dormitory, Yonsei University Mirae Campus, 1 Yonseidae-gil, Wonju-si, Gangwon-do, 26493, Republic of Korea.
- Address (Korean): (26493) 대한민국 강원특별자치도 원주시 연세대길 1 연세대학교 미래생활관.

Facilities

Each room is equipped with essential furnishings: bed, desk, closet, mattress (excluding bedding), small refrigerator, air conditioner, shoe rack, bookshelf, and wired LAN. Shower facilities and flush toilets are provided in each room. Students need to bring or purchase individual bedding (blanket, pillow). Every floor offers a lounge area furnished with a microwave for heating food. Janitorial staff oversee building security. The dormitories have curfew hours from midnight to 5 am, with elevator access available. Monthly rent will be covered jointly by Yonsei University and KOICA.



Regulations

Tenant regulations and guidelines will be disseminated during the orientation period.

3. OTHER INFORMATION

University libraries

Main library (<http://wlib.yonsei.ac.kr>) at Yonsei University Mirae Campus is centrally situated within the university grounds. The Study Room located in the basement (B1) operates 24 hours a day, every day of the year. The periodical room provides access to a variety of resources including books, journals, and newspapers. Additionally, students can utilize internet access to gather necessary information.

Area	Open for Weekdays	Open for Saturday
Seminar Rooms (1F) Seminar Rooms (4F) Room for Private Laptops	6:00 – 23:00	6:00 – 23:00
Others (Periodical room, Multimedia room, etc.)	9:00 – 22:00	9:00 – 13:00

Note. More information is addressed on the Main Library website as below.
<http://wlib.yonsei.ac.kr/main/main.do?.sLang=en>



International Students Offices

- **International Education Center (<http://yiec.yonsei.ac.kr>):** The International Education Center manages study programs in collaboration with partner universities worldwide and supports both incoming and outgoing exchange students. It offers services to international scholars and students on campus. Located at Room 314, Yonsei Plaza. Contact: Tel. +82-33-760-2727, E-Mail: yiec@yonsei.ac.kr.
- **The Graduate School of Government and Business (<http://yonseigsgb.ac.kr/main.php>)**

The Graduate School Office provides academic information and comprehensive services for graduate school students. Situated at Room 305, Jeongui Hall. Contact: Tel.+82-33-760-2484, Fax. +82-33-760-4324.

• **Yonsei-KOICA Scholarship Program (Website: <http://koica.yonsei.ac.kr/>)**

The Yonsei-KOICA Office offers academic information and support services specifically for students enrolled in this program. Located at Room 219, Jeongui Hall. Contact: Tel. +82-33-760-2482, Fax. +82-33-760-4324.

PC Labs on Campus

Each building within the campus is equipped with PC labs accessible for students, providing resources for word processing, internet access, and more. Moreover, printers are available in the lobbies of all buildings; however, students are advised to bring their paper for printing purposes.

Building	Room Number	Facilities
Jeongui Hall	#127, #215	Computers, Printer, Scanner, Copy Machine
Cheongsong Hall	#527	Computers (Statistical Analysis Software)
Main Library	All Floors	Computers, Printer, Copy Machine

Cafeteria

Cafeteria	Location	Hours	Food Served
Student Cafeteria 1	2nd Floor of Yonsei Plaza	7:30AM–7:00PM	Korean / Western Meal
Student Cafeteria 2	1st Floor of Student Union Building	8:00AM-7:00PM	Korean / Western Meal
Food Court	1st Floor of Student Union Building	9:00AM-8:00PM	Korean Meal
Chinese Restaurant	2nd Floor of Yonsei Plaza	9:00AM-9:00PM	Korean / Chinese Meal

Others

Facilities	Functions	Location
I-Lounge	PC use, Coffee, Seminar rooms	4th Floor of Student Union
Fitness Center	Swimming Pool, Weight training, Racquetball, Skin scuba training, etc.	Yonsei Sports Center
Dormitory Office	It assists students who reside in on-campus housing.	1st Floor, Cheongyeon Dormitory
Sexual Harassment Counseling Center	Yonsei Sexual Harassment Counseling Center aims to minimize the damage caused by sexual harassment by promptly dealing with issues of sexual harassment that might occur on campus by providing counseling services.	Room 208, Student Union
Shoes Repair Shop	Students could repair their shoes and make personal stamp.	1st Floor, Student Union
Woori Bank	Students can open bank account, deposit and withdraw and so on.	1st Floor, Yonsei Plaza
Post Office	Students can send airmail as well as postcards and parcels.	1st Floor, Yonsei Plaza

Travel Agency	Students can purchase train tickets and make a reservation for airline tickets to take a trip to major Korean cities and other countries.	1st Floor, Yonsei Plaza
Book Store	Students can buy textbooks and other books.	1st Floor, Yonsei Plaza
Photocopy Room	Students can make a copy of any paper material.	1st Floor, Yonsei Plaza
ATM	Students can withdraw, deposit, and transfer money.	Yonsei Plaza, Student Union Building
Nu-ri Sam	Stationary & souvenir store.	1st Floor, Yonsei Plaza
Laundry	Students can wash not only clothings, but also bedding, shoes, and others.	1st Floor, Yonsei Plaza
Optician's	Students can buy glasses, frames, and lens.	1st Floor, Yonsei Plaza
Convenient Store	Students can buy necessities and foods	1st Floor, Yonsei Plaza

Health care center

For minor health issues such as colds or digestive problems, students are strongly advised to visit the health care center situated on the third floor of the Student Union Building. Medical doctors and nursing services are available during specific hours, and the center also offers dental check-up services.

Location	• Student Union Building
Telephone	• 033) 760 – 2641
Office Hour	• 9:00AM – 5:00PM, Weekdays

Wonju Severance Christian Hospital, Yonsei University

Yonsei University Mirae Campus is situated near the downtown area of Wonju, hosting the Wonju Severance Christian Hospital, a substantial facility boasting approximately 900 beds and comprehensive medical services. For serious health concerns or medical check-ups, students can access the Wonju Severance Christian Hospital. We advise students to consult either the dormitory office or the Yonsei-KOICA Scholarship Program office before visiting the hospital, as we will facilitate appropriate arrangements on behalf of the students.

Available Services	<ul style="list-style-type: none"> • Appointment • 1:1 Care for outpatients • English Bill & Certificate Issue Service • Inpatient & ER patient coordinators • Medical Check-up
Contact Information	<ul style="list-style-type: none"> • Tel: +82-33-741-0114 • Homepage: https://www.ywmc.or.kr/web/eng/introduction

Note. Under Korea's prescription law, the dispensation of medicine is separate from medical practice. Patients are required to obtain a doctor's prescription and present it to a pharmacist, who prepares the prescribed medication. Pharmacies are situated in close proximity to hospitals, ensuring convenient access for patients.

Gangwon State Wonju Medical Center

Wonju Medical Center was initially established as Jahye Hospital in 1942 and evolved through the Wonju Local Government Hospital in 1983, becoming a public hospital responsible for the Yeongseo-Namdo region in Gangwon Province. Over time, it has grown to represent Gangwon Province as a public hospital responsible for the region and, amidst the nationwide pandemic due to the recent COVID-19 crisis, it has been designated as a 'National Safe Hospital' and an 'Infectious Disease Exclusive Hospital'. This

designation solidifies its position as a leading public hospital, contributing significantly to the health of Wonju citizens and residents of Gangwon Province.

Available Services	<ul style="list-style-type: none">• Appointment• 1:1 Care for outpatients• English Bill & Certificate Issue Service• Inpatient & ER patient coordinators• Medical Check-up
Contact Information	<ul style="list-style-type: none">• Tel: +82-33-760-4500• Homepage: https://www.kwmc.or.kr/

IV. ACADEMIC REGULATIONS

1. ACADEMIC REGULATION

Attendance and absenteeism

Students are required to attend all classes they have registered for in each semester. Failure to attend at least one-third of the total class hours without valid reasons will result in an evaluation of 'fail (F)'.

- Students are allowed to be absent under the following circumstances, provided they notify the office or relevant faculty and receive prior approval.
- Death of an immediate family member (grandparents, parents, siblings) or similar circumstances.
- Academic planning, field-trips, on-location training, etc.
- Participation in seminars or conferences (including international ones) approved by the Program Director.
- Other events approved by the Program Director.

For student illness or emergency situations, if the absence is anticipated to be less than seven days (including holidays and weekends), a written notification must be submitted to the Program Director. For absences exceeding seven days, students are required to provide a written diagnosis from a physician.

Residence Obligation at Yonsei Dormitory, Yonsei Mirae Campus

Students are required to reside in the Yonsei dormitory on campus,

Residing off-campus is not permitted.

Compliance with Residency Regulations

The Yonsei dormitories at Mirae campus accommodate over 3,500 undergraduate and graduate students, enforcing stringent residency regulations. All resident-students are mandated to comply with these regulations, including single or double occupancy per room.

Examinations and Grade Evaluation

Minimum Grade Point Average Requirements: Students must maintain a minimum B- (2.7 GPA or 80-82 scores) to successfully graduate from the program.

Regular Exams and Make-up Exams

- **Regular Exams:** Mid-term examinations (7th to 8th week of the semester), Final examinations (last two weeks of the semester).
- **Make-up Exams:** If a student is unable to take an exam due to reasons such as illness, they must notify the course faculty before the scheduled test date. A make-up exam can then be arranged at another suitable time.
- **Scholastic Performance Evaluation Method:** Evaluation of scholastic performance is based on a 100-point scale for each registered course. Assessment considers classroom participation (presentations, attendance) and test performance (mid-term and final exams).
- **Evaluation Standards:** Grades are determined based on comprehensive assessment of academic performance, encompassing both classroom engagement and examination results.

Grades	Score (%)	Grade Point	Grades	Score (%)	Grade Point
A+	97-100	4.3	C+	77-79	2.3
A0	93-96	4.0	C0	73-76	2.0
A-	90-92	3.7	C-	70-72	1.7
B+	87-89	3.3	D+	67-69	1.3
B0	83-86	3.0	D0	63-66	1.0
B-	80-82	2.7	D-	60-62	0.7
			F	0-59	0.0
			P/NP		Pass/Non-pass

2. MANDATORY DORMITORY RESIDENCE

Participants will be accommodated in on-campus Seiyeon and Cheongyon dormitories, with two students assigned to a room based on demand. Regular facility maintenance involves rearranging resident-student living spaces.

** If a fellow stays in external accommodations due to personal responsibility, separate KOICA support will not be provided.*

3. COMPLIANCE WITH RESIDENCY RULES

Tenant regulations and guidelines will be disseminated during the orientation period.

4. GRADUATION REQUIREMENTS

To qualify for graduation, students must maintain a GPA above 2.7, equivalent to higher than B-, and complete the required credits according to their chosen track: 34 credits for the thesis track or 39 credits for the action plan report track. Students must also submit either a master's thesis or an action plan report, depending on their selected track.

5. PARTICIPANT RESPONSIBILITIES

Students are required to adhere to the following guidelines:

- **Acceptance of Scholarship:** Students must utilize the scholarship in the academic year it is offered; deferral is not permitted.
- **Compliance and Commitment:** Students must wholeheartedly engage in the training program, adhering to the regulations of KOICA.
- **Residency Requirement:** Students must reside in the designated accommodation provided by the training institute throughout the course duration, except during holidays or approved temporary leave.
- **Academic Responsibility:** Maintaining a suitable study load and achieving academic progress is essential. Failure to meet the university's required grades may result in the suspension of their status as a KOICA program participant.
- **Active Participation:** Students are expected to participate in all activities associated with the approved course of study, including lectures, tutorials, submission of required coursework, and examinations, unless advanced approval from the training institute is obtained.

- **Notification and Approval for Leave:** Any planned temporary leave must be communicated to the training institute in advance and receive approval.
- **Personal Circumstances:** Students must inform KOICA and the training institute of any personal or familial circumstances, such as health or family issues, significantly impacting their studies.
- **Restrictions:** Refrain from involvement in political activities or engaging in employment for financial gain.
- **Information Sharing:** Agree to KOICA collecting and sharing relevant information if necessary.
- **Return to Home Country:** Upon completion of the training program, students are expected to return to their home country.
- **Program Duration:** Extension of the training program or stay for personal convenience is not permitted. Neither KOICA nor the university will offer assistance or be responsible for any extension of stay beyond the program's designated duration.

6. CODE OF CONDUCT

The KOICA-Yonsei Master's Program on Social Economy is dedicated to more than just academic rigor; we strive to cultivate a professional and inclusive community rooted in integrity and mutual respect. To ensure a safe and supportive learning environment for all participants from diverse global backgrounds, all enrolled students are required to review and sign the official Code of Conduct. This document serves as a foundational agreement, outlining essential standards in areas such as:

- **Professionalism & Academic Integrity:** Upholding the highest ethical standards in research and collaboration.
- **Diversity & Inclusion:** Fostering an atmosphere free from discrimination and harassment.
- **Zero Tolerance for Misconduct:** Explicitly prohibiting sexual violence and harassment to protect the safety and dignity of every member.

By adhering to these principles, our students contribute to a culture of excellence that prepares them to be responsible leaders in the global social economy. Compliance with this Code is mandatory, and it reflects our shared commitment to the values of Truth and Freedom.

Code of Conduct

KOICA-Yonsei Master's Program on Social Economy is committed to creating a supportive and inclusive learning environment that fosters growth, respect, and collaboration among participants. This Code of Conduct outlines the standards of behavior expected from all students enrolled in the program.

1. Respect for Others:

- 1.1. Treat all fellow participants, instructors, and staff with respect and courtesy.
- 1.2. Embrace diversity and maintain an inclusive atmosphere, respecting differences in culture, opinions, and backgrounds.
- 1.3. Avoid discriminatory language or behavior based on race, gender, religion, nationality, sexual orientation, or any other characteristic.

2. Professionalism:

- 2.1. Demonstrate professionalism in all interactions, both in-person and online.
- 2.2. Be punctual for classes, meetings, and assignments.
- 2.3. Communicate promptly and professionally with instructors, fellow students, and program administrators.

3. Academic Integrity:

- 3.1. Uphold the highest standards of academic integrity.
- 3.2. Avoid plagiarism, cheating, or any form of dishonesty in coursework and assessments.
- 3.3. Give credit to the ideas and work of others through proper citation and referencing.

4. Confidentiality:

- 4.1. Respect the confidentiality of information shared during the program, especially when discussing case studies or sensitive topics.
- 4.2. Do not share or disclose confidential program materials or information outside of the program without explicit permission.

5. Active Participation:

- 5.1. Actively engage in program activities, discussions, and assignments.
- 5.2. Contribute constructively to class discussions, debates, and group projects.
- 5.3. Seek clarification when necessary and ask questions to enhance understanding.

6. Communication:

- 6.1. Use respectful and clear communication in all interactions.
- 6.2. Notify instructors or program administrators promptly of any issues or concerns related to the program.

7. Use of Technology:

- 7.1. Use program-provided technology platforms and resources responsibly and for program-related activities only.
- 7.2. Respect copyright and intellectual property rights when using digital resources.

8. Prohibition of Sexual Violence and Sexual Harassment:

- 8.1. KOICA-Yonsei Master's Program on Social Economy is committed to providing a learning environment free from sexual violence and sexual harassment.

8.2. Sexual violence includes but is not limited to physical assault, non-consensual sexual contact, and any other unwelcome sexual conduct.

8.3. Sexual harassment includes unwelcome sexual advances, requests for sexual favors, and other verbal or physical conduct of a sexual nature that creates an intimidating, hostile, or offensive environment.

8.4. All participants are expected to refrain from engaging in any form of sexual violence or sexual harassment, whether in person or through digital communication.

8.5. Report any incidents of sexual violence or sexual harassment promptly to program administrators or instructors, who will take appropriate action to address the issue while maintaining confidentiality to the extent possible.

8.6. KOICA-Yonsei Master's and Doctoral Program on Social Economy will take all reports of sexual violence and sexual harassment seriously and will investigate and address such reports promptly and thoroughly.

8.7. Any individual found to have engaged in sexual violence or sexual harassment may face immediate disciplinary action, including expulsion from the program.

* Confidentiality: Reports of sexual violence and sexual harassment will be treated with the utmost confidentiality, and information will be disclosed only on a need-to-know basis to protect the privacy and safety of all parties involved.

9. Compliance with Program Policies:

9.1. Adhere to all program policies, including attendance requirements, deadlines, and assessment guidelines.

9.2. Report any violations of this Code of Conduct to program administrators.

Consequences of Violation:

Violations of this Code of Conduct may result in disciplinary actions, which may include warnings, temporary suspension, or expulsion from the program, depending on the severity of the violation and its impact on the learning environment.

Acknowledgment:

By enrolling in KOICA-Yonsei Master's Program on Social Economy, I acknowledge that I have read, understood, and agree to abide by this Code of Conduct. I understand that failure to comply with this Code of Conduct may result in disciplinary actions.

Signature: _____ Date: _____

7. WITHDRAWALS

Students are generally prohibited from voluntary withdrawal once the course commences. However, withdrawal may be permitted under valid and substantiated personal or home country reasons, such as health or work-related issues, subject to KOICA's approval. Should withdrawal be granted under such circumstances, students are ineligible to reapply for KOICA's scholarship program for the subsequent two years. In instances where a participant fails to meet the required grades set by the training institute, they may be compelled to withdraw and return home. Under these circumstances, reapplication for KOICA's scholarship program is not allowed. Furthermore, students who have withdrawn must reimburse the living allowance they have received for the remaining period from their date of departure from Korea. These students are also restricted from reapplying for KOICA's scholarship program.

8. TEMPORARY LEAVE

Students are permitted to take temporary leave during school vacations, allowing travel to their home country or abroad, provided it does not disrupt their academic responsibilities. However, prior notification to the university is mandatory. During such temporary leave, KOICA and the university will not cover airfare expenses, and the students' living allowance will be suspended from the day of departure until their return. Any undisclosed temporary visits to their home country or unauthorized travel to other countries despite the university's disapproval may result in the suspension of the student from the KOICA scholarship.

9. PROHIBITION OF ACCOMPANYING OR INVITING FAMILY MEMBERS

Due to the intensive nature of KOICA's Scholarship Program, participants are strictly prohibited from accompanying, bringing, or inviting any family members to Korea during the entire period of the program. KOICA and the University do not provide any financial, administrative, legal, or other forms of assistance for participants' family members or dependents under any circumstances. Participants are therefore not permitted to invite family members to Korea, regardless of the duration or purpose of the visit.

All participants are required to fully understand and comply with this regulation throughout their participation in the program.

10. OTHERS

KOICA holds responsibility only within the defined limits and scope of insurance coverage for participants. It does not assume liability for any damage or loss of participants' personal property. Additionally, KOICA is not responsible for illness, injury, or death resulting from extracurricular activities, intentional misconduct, or undisclosed pre-existing medical conditions. In the event that students violate any rules set by KOICA or the training institute during their stay in Korea, their status as a KOICA program participant may be subject to suspension.

V. PRECAUTIONS

1. **Possibility of Online Program:** The regular program is planned as an offline residential program at Yonsei University Mirae Campus. However, online or hybrid components may be introduced if required by KOICA, university policy, public health conditions, or other unavoidable circumstances.
2. **Religious Meals & Personal Food Preferences:** The campus provides Korean/Western meals through student cafeterias and food courts. Students with religious dietary needs or personal food preferences should understand that specialized meals may be limited and may need to manage some dietary requirements independently.
3. **Regulatory Compliance:** KOICA SP participants should observe KOICA Scholarship Fellows' Guidebook and University internal rules and regulations, otherwise the participant would lose one's status as SP participants and a university student.

VI. HOW TO APPLY TO INSTITUTE(UNIVERSITY)

■ This page is intended as reference for applicants who have successfully advanced through the KOICA (Korean Embassy) Round conducted by KOICA country office(Korean Embassy).

■ Application Method

- The school will notify successful applicants regarding university enrollment and will offer guidance on subsequent schedules related to those who have successfully completed the KOICA Round conducted by KOICA overseas Office (Korean Embassy)

• Admission Steps	Contents	Period
Step 1	Application Package Submission (Via University application system or email)	2026.09.01. ~ 2026.09.14.
Step 2	Document Screening	2026.09.15. ~ 2026.09.30.
Step 3	Local Medical Check-up	2026.10.01. ~ 2026.10.11.
Step 4	Interview Test of University (or/and Exam/Essay)	2026.10.01 ~ 2026.10.30
Step 5	Second Round Result	2026.11.06
Step 6	Submission of Original University Documents (To Yonsei University by international courier (e.g., DHL, EMS))	2026.11.07. ~ 2026.12.7
Step 7	Admission Notification	2026.12.14

*The above schedule is subject to change.

■ Detailed Information

1) Step 1: University Documents Submission

- Applicants who have successfully advanced through the KOICA Round are required to submit the necessary documents to Yonsei University through the university's online application system. The application link (to be announced) will be sent to eligible applicants via email.
- Applicants must prepare all required documents for their admission package and complete the "Document Checklist" to ensure that all information is accurate. The complete application package, including the Yonsei University application forms, KOICA application forms, and all other required documents, must be submitted through online system by the deadline: **September 14, 2026.**

2) Step 2: Document Screening

- Applications submitted by candidates nominated by the KOICA country office or, where a KOICA country office is unavailable, by the Korean Embassy, will be reviewed and evaluated by Yonsei University.
- Based on the submitted documents, Yonsei University will assess each candidate's educational background and professional experience, as well as verify whether all required documents have been properly prepared and submitted. The nominated candidates will undergo a rigorous document screening conducted by Yonsei University's Selection Committee. To ensure a comprehensive and objective assessment, the committee will apply a balanced scoring system that evaluates the following components:

- **Academic Foundation:** Institutional reputation of the undergraduate school and GPA.
- **Professional Experience:** Current affiliation, years of service, and relevance of work experience to the social economy and public policy sectors.
- **Future Potential & Alignment:** Review of the Statement of Purpose (SoP) and Study Plan to assess the applicant's commitment to driving social innovation and the feasibility of their proposed Action Plan.
- **Language Proficiency:** Verified English test scores to ensure successful engagement in an international academic environment.
- **Leadership Qualities:** Evaluation of letters of recommendation from supervisors or academic mentors.

Note. The 1st round selection outcome will be communicated to both the applicants and KOICA. Please note that university maintains a policy of non-disclosure regarding the specific results of the document screening.

3) Step 3: Local Medical Check-up

- The medical check-up will evaluate applicants' health conditions, ensuring they meet the necessary criteria for participation in the scholarship program. Coordinating agency-appointed doctors will verify any health factors that might impede the successful completion of the program.
- Those who have successfully passed Step 2: Document Screening must submit the medical examination result by **October 11, 2026**

4) Step 4: Interview (online interview)

- Applicants who successfully pass Step 2: Document Screening will be invited to an online interview.
 - **Eligibility and Scheduling:** Candidates selected from the document screening will proceed to an in-depth interview. The interview will be conducted via online video platforms (e.g., Zoom, Google Meet, or Skype). Shortlisted candidates will be notified of their specific time slots at least 72 hours in advance via the Graduate School of Government and Business at Yonsei University Mirae Campus.
 - **Evaluation Framework:** The interview committee, consisting of Yonsei University faculty and social economy experts, will assess candidates based on four core dimensions:
 1. **Academic & Professional Aptitude:** Evaluation of previous academic background and the relevance of work experience to the social economy major.
 2. **Study Plan & Future Contribution:** Assessment of the applicant's "Study Plan" and their specific goals to drive social innovation in their home country upon completion of the degree.
 3. **Language Proficiency:** A comprehensive review of the candidate's ability to engage in high-level academic discourse and research in English.
 4. **Leadership & Adaptability:** Verification of the candidate's interpersonal skills and readiness to adapt to a rigorous multicultural academic environment.
 - **Final Selection:** Interview results will be consolidated with document screening scores for the final admission decision. KOICA will provide individual notification of the final results.

5) Step 5: Submission of Original University Documents:

- Applicants are required to prepare in advance for document authentication (which must be Apostilled/Consular Authenticated) and have them ready to be sent to the university as soon as the result of the 2nd round (Step 4: Interview) has been announced.
- Those who have been finally accepted at the university round are required to submit original documents to the university directly by international courier (e.g., DHL, EMS). Shipping costs will be reimbursed by

the university upon submission of the original receipt after arrival in Korea.

- If there are issues with the original documents, the final candidates may be placed on hold or disqualified. Please ensure that the submitted documents are accurate and complete. And please check accurately with university staff.

- **Required Documents (original documents to be sent to Yonsei University)**

1. Undergraduate Diploma
2. Official Undergraduate Transcript
3. Official English Proficiency Test Score Report (TOEIC, TOEFL, IELTS ITP only)

- **Important Notice**

Documents not issued in English must be apostilled. Degree certificates and academic transcripts must be notarized.

Note. If the degree certificate and academic transcript are not issued in English, both an apostille and notarization are required.

- **Recipient/ Mailing Address:**

To the KOICA Social Economy Master's Program Coordinator
(26493) Jeongui Hall Room 305, College of Humanities and Social Sciences Convergence, Yonsei University Mirae Campus, 1 Yonseidae-gil, Wonju-si, Gangwon State, Republic of Korea
Office: +82-33-760-2302~4

- **Submission Deadline: 2026. 12. 07.**

※ Please ensure that the package arrives at the University by the deadline.

※ Bear in mind that if the documents are not properly authenticated OR if there are any missing documents, you may have to supplement them again through express mail at your own expense.

6) Admission Notification

- Admission result will be notified to the regional KOICA country office or Korean embassy. Registration instructions, course registration, and information on other necessary steps will be provided individually to the successful applicants.

☐ Required Documents (for online submission)

1. KOICA APPLICATION FORM

2. OTHER DOCUMENTS:

- 1) Application for Admission (university's form required)
- 2) Personal Statement (university's form required)
- 3) Two Letters of Recommendation (university's form required)
- 4) Bachelor's Transcript(s) (undergraduate grades/marks)
- 5) Certified copy of a Bachelor's degree diploma
- 6) Passport photo (3cm x 4cm)
- 7) Employment verification (if applicable)
- 8) Evidence of English Competency (e.g., TOEFL, TOEIC, IELTS score) for non-native English speakers (if applicable)

VII. CONTACTS

1. CONTACT INFORMATION

1) (Admissions Division) Yonsei University Mirae Campus

- Performance Manager: Prof. Sung-Jin Park
 - ✓ Affiliation: Graduate School of Government and Business
 - ✓ Address: #405, Jeongui Hall, Yonsei University Mirae Campus, 1 Yonseidaegil, Wonju, Gangwon-do, 26493, Republic of Korea
 - ✓ Phone: +82-33-760-2320
 - ✓ E-Mail: sjpark2@yonsei.ac.kr
 - ✓ Home page: <http://koica.yonsei.ac.kr>

2) (Student Affairs Division) Yonsei University Mirae Campus

- Academic Manager: Prof. Miyang Jun
 - ✓ Affiliation: Graduate School of Government and Business
 - ✓ Address: #427, Jeongui Hall, Yonsei University Mirae Campus, 1 Yonseidaegil, Wonju, Gangwon-do, 26493, Republic of Korea
 - ✓ Phone: +82-33-760-2315
 - ✓ E-Mail: miyang@yonsei.ac.kr
 - ✓ Home page: <http://koica.yonsei.ac.kr>

3) General requests regarding application process

- E-mail : koica.sp@koworks.org
- Homepage : <http://www.koica.go.kr/sites/ciat/index.do>

*The schedule in PI (Program Information) is changeable according to the KOICA and University's schedule.